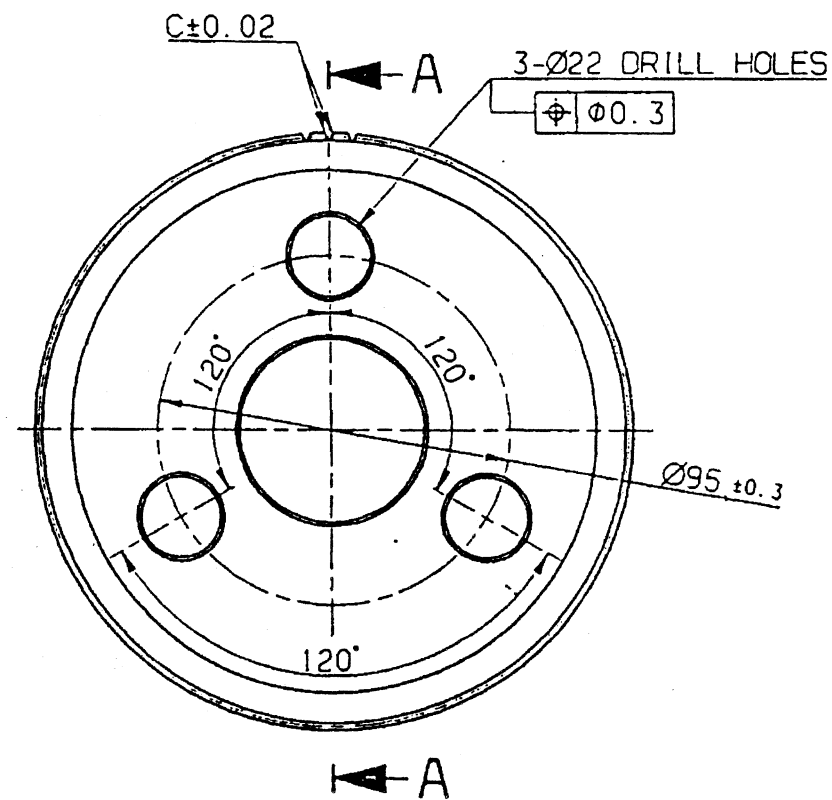
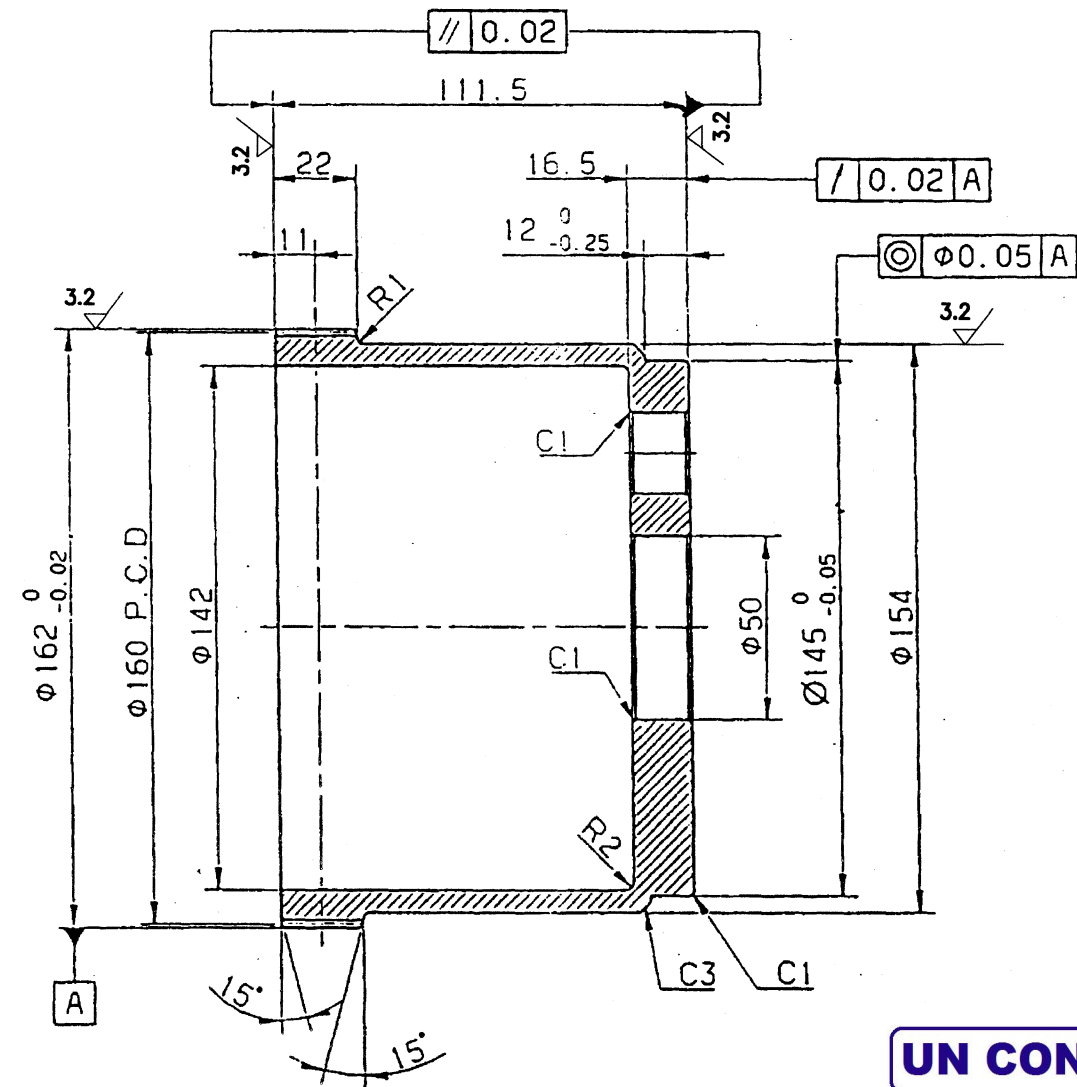


MACHINING DEVIATIONS FOR LINEAR DIMENSIONS	RANGE	0 – 6	6 – 30	30 – 120	120 – 315	315–1000	1000–2000	2000–4000	ABOVE 4000
	TOLERANCE	±0.1	±0.2	±0.3	±0.5	±0.8	±1.2	±2	±3
FOR DIMENSIONAL TOLERANCES OF SHEET METAL PARTS AND WELDED STRUCTURES, REFER STD. RD-227									
UNSPECIFIED TOLERANCE FOR LINEAR AND ANGULAR DIMENSIONS REF. IS 2102 (PT-1) (MEDIUM)									
VALUES OF SURFACE TEXTURE SHALL BE AS PER COMPANY STD DS. 1012.C.						PROTO / PILOT / PRODUCTION			
QUALITY OF WELD JOINTS REF, ISO: 5817									




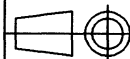


NOTE

1. BASIC RACK : TOOTH PROFILE : DIN867
MODULE : 2
NO. OF TEETH : 80
TOOTH THICKNESS : $S = 3.14 \begin{smallmatrix} 0 \\ -0.16 \end{smallmatrix}$ (27h DIN 3967)
2. BREAK SHARP CORNER
3. PART SHALL BE ZINC PLATED AS PER SERVICE Gr. No. 2 OF IS:1573-86
AND CHROMATE PASSIVATED TO COLOUR IRIDESCENT YELLOW



UN CONTROLLED COPY

SECTION A-A

SL No.	QTY	DRG. / STOCK No.	DESCRIPTION	SIZE	COMPANY.STD/IS.STD	Wt.Kg
			DETAIL PARTS	MATERIAL		
			PRODUCT	METRO BOGIE		
				SURFACE TREATMENT		
				APPROVED	JP	5.1.08
				CHECKED	GSK	5.1.08
				DRAWN	ILYAS	4.1.08
	NOTE REVISED	10-5-11	1	909-81009	909	REF DRG 1130
		12/4/5	1	909-81008	909	SCALE 
ALT	CHANGES / ECN No.	DATE	BY	CKD	APP	SHEET OF
			QTY	NEXT ASSY	MODEL	Wt (Kg)
			TITLE			ALT
			BEM LIMITED R&D, BANGALORE COMPLEX BANGALORE 560 075			909-81111
			WHEEL, POLE (WSP)			

SURFACE ROUGHNESS		N11	N10	N9	N8	N7	N6	N5	N4	N3	N2	N1
GRADE No.												
VALUE		50/25	12.5/6.3	6.3/3.2	3.2/1.6	1.6/0.8	0.8/0.4	0.4/0.2	0.2/0.1	0.1/0.05	0.05/0.025	
SYMBOL												